



FORTUNE
PROSPERA



L I V E T H E I M A G I N A T I O N



APEX OF LUXURY LIVING

Introducing Fortune Prospera- an apex of luxury living in the heart of Chhatrapati Sambhajnagar. This project exemplifies contemporary elegance and comfort. The project features sophisticated design elements and a suite of high-end amenities. Fortune Prospera offers opulent 3 & 4 BHK flats and exclusive penthouses.



FORTUNE
PROSPERA



TIMELESS ARCHITECTURAL ELEGANCE

The external design of Fortune Prospera captures the essence of upscale living. It harmoniously blends modern elegance with timeless sophistication. The building's facade is a striking example of contemporary architecture, featuring clean lines, bold geometric shapes, and a sophisticated color palette that exudes class and refinement.

The project is by Swift Engineering Pvt. Ltd. Which is a leading name in the real estate of Chhatrapati Sambhajinagar.

CHIKALTHANA

Effective structural grid to encourage the greatest number of spaces

Two-panned facade

Interactive space planning



URBAN LIFESTYLE AT ITS FINEST

This project promises the finest lifestyle of elegance and ease. Experience the ultimate urban living with Fortune Prospera, where every detail is crafted to enhance your luxury experience. This is a prestigious project on a prime location, it will be considered as a gem to the city's skyline.

It has best of urban amenities while offering a serene, sophisticated living environment.





EXPERIENCE PURE SOPHISTICATION AT FORTUNE PROSPERA



Some things are eternal, like your dream home. It deserves impeccable style, fabulous luxuries, top class amenities and abundant natural beauty. It must be a source of infinite delight and invaluable memories. It must offer you a life you've always dreamt of.

PERFECT BALANCE

Sustainability is of prime importance at Fortune Prospera. Our endeavour to be environmentally responsible includes :



RAINWATER HARVESTING SYSTEM

Saves more natural water for future use and vastly improves water sustainability.



WATER-EFFICIENT FIXTURES

This simple addition ensures that water consumption is optimised and water bills are reduced.



SOLAR PHOTOVOLTAIC SYSTEM

Making use of solar energy, thereby reducing electricity bills.



RECYCLED CONSTRUCTION MATERIALS

Recycled and locally produced materials have been used, thereby reducing carbon dioxide emissions.



GREY WATER TREATMENT

Used water is treated and safely reused, thus reducing use of new water.



SMART LIGHTING

CFLs and LEDs are used in external and common lighting areas to promote low electric consumption.



HEALTH-SAFE PAINTS AND ADHESIVES

Low Volatile Organic Compound (VOC) paints, adhesives and sealants for interior fixtures ensure your health and safety.



WASTE SEGREGATION SYSTEM

Wet and dry waste management has been implemented to ensure that waste is managed in an eco-friendly manner.



ULTIMATE LUXURY RESIDENCES





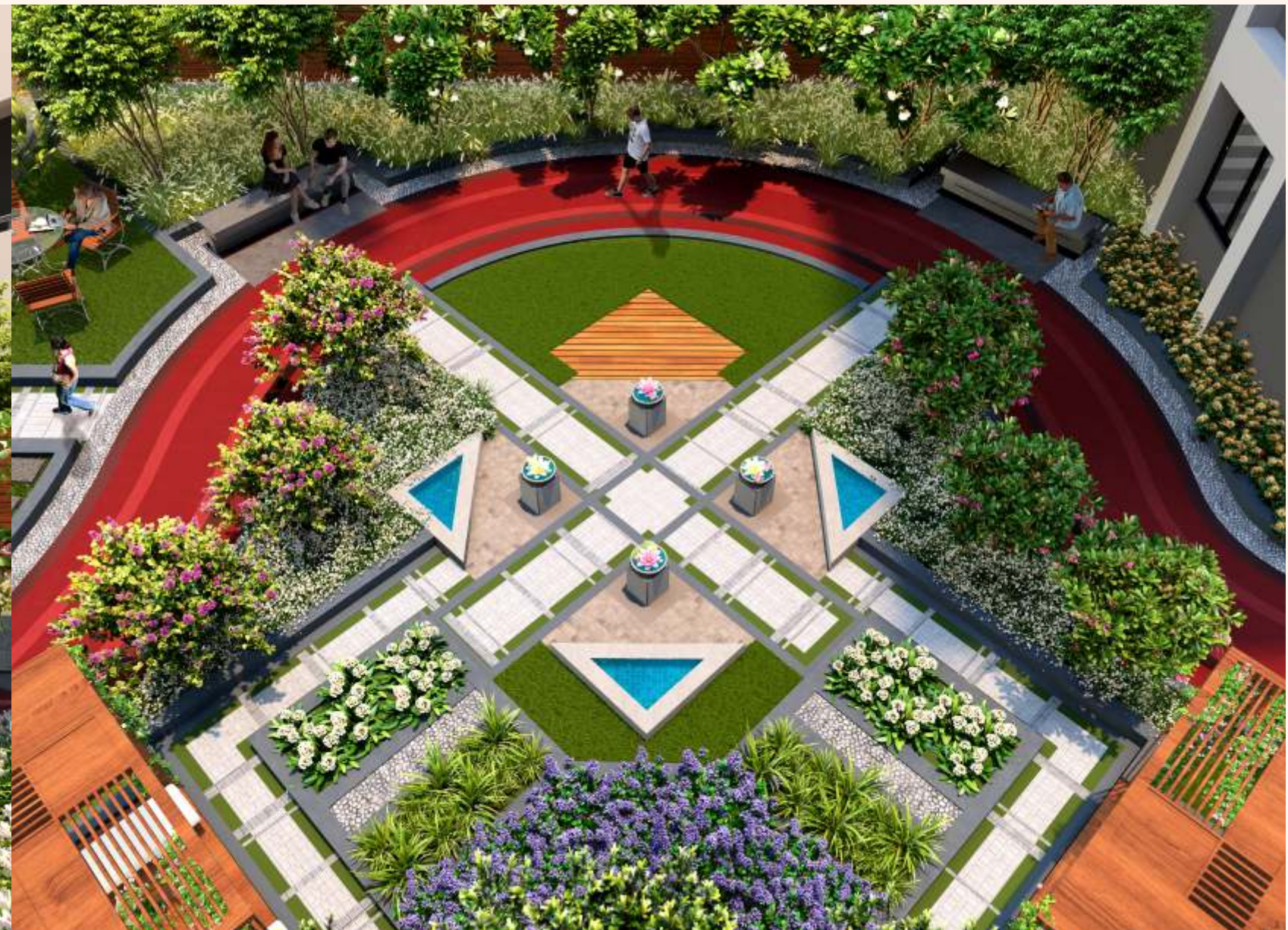
REVEL IN
REFINED
LIVING



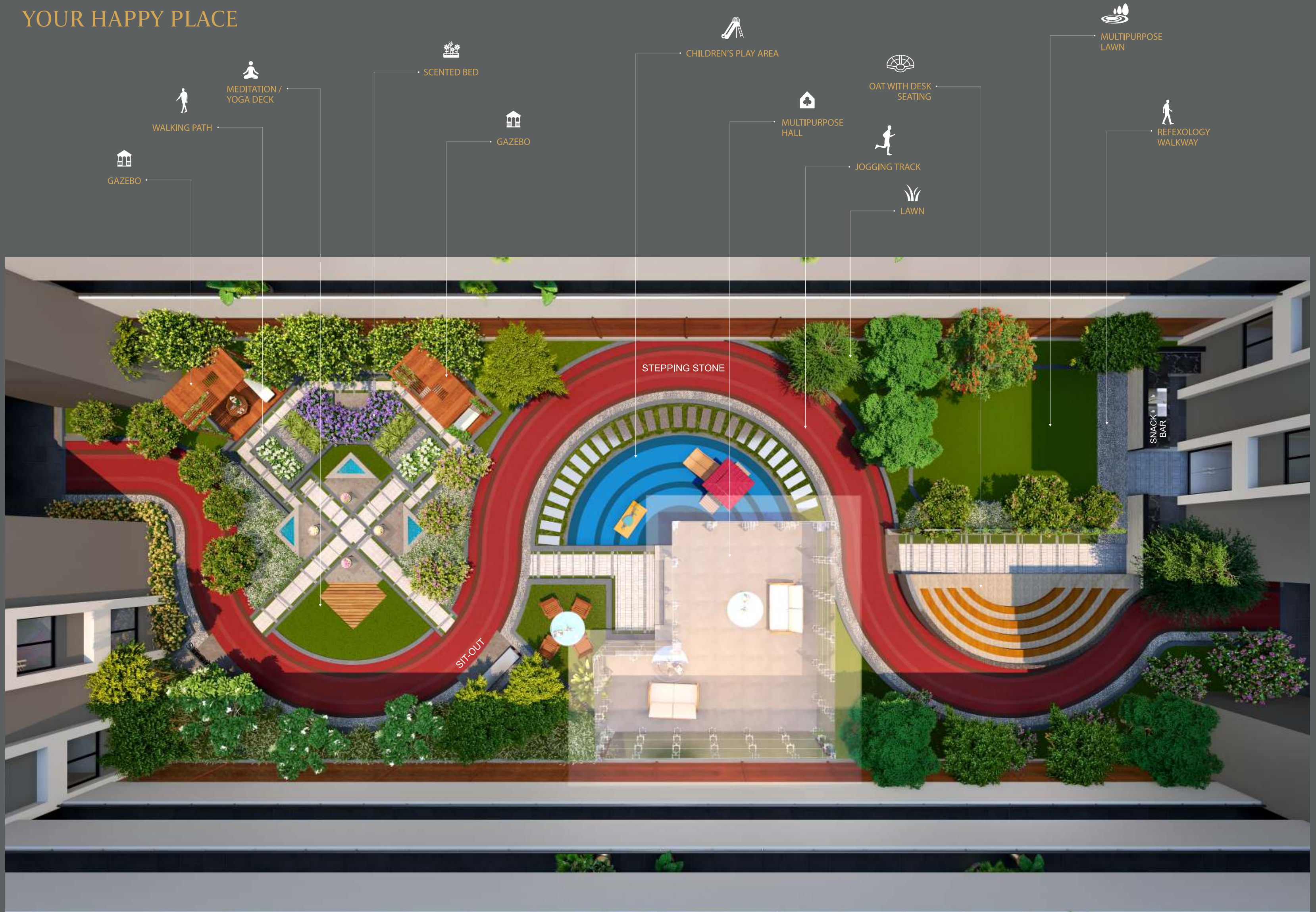


INDULGE IN SERENITY

Fortune Prospera is thoughtfully designed to integrate serene, verdant spaces that provide a refreshing escape from the urban hustle. Beautifully landscaped gardens, and serene walking paths create a soothing environment where residents can unwind and connect with nature.



YOUR HOME YOUR HAPPY PLACE





AMENITIES THAT ELEVATE YOUR LIFESTYLE

Fortune prospera offers exceptional amenities. The project also offers dedicated spaces for relaxation and socializing, such as a clubhouse, landscaped gardens, and multi-purpose recreational areas. With an emphasis on comfort and convenience, Fortune Prospera ensures that every amenity enriches your lifestyle and enhances your living experience.

SPORTS AMENITIES

- Podium Garden
- Gazebos
- Flower Beds
- Club House
- Ampule 2 Floor Allotted Parking
- Visitors Parking
- 24 Hour Water Supply
- Lift With Power Backup
- Provision Of EV Charging Points
- Solar Energy Power For Common Electricity

SPECIAL FEATURES

- Video Door Phone
- 24 Hours Security
- Cctv Surveillance
- Gated Community
- Compound Wall To Total Plot Area
- Entrance Gate
- Rain Water Harvesting
- Fire Fighting System
- Sewage Treatment Plant
- Waste And Garbage Management

DISCOVER THE ADVANTAGE OF CITY-CENTER LOCATION

Fortune Prospera's central location ensures that residents are at the epicentre of city life, with easy access to key locations and services. The project features sophisticated design elements and a suite of high-end amenities, making it a premier choice for those who desire both convenience and luxury.

Airport

3.0 kms



Railway
Station

3.0 kms



Hospital

1.8 kms



School

1.0 kms



Prozone
Mall

1.0 kms



Jalna
Road

1.6 kms



ELEGANCE IN EVERY CORNER

Spaces at Fortune Prospera are a sanctuary of sophistication and style, designed to embody the essence of elegant living. Upon entering, you are greeted by an expansive, light-filled space that seamlessly combines modern luxury with timeless charm.

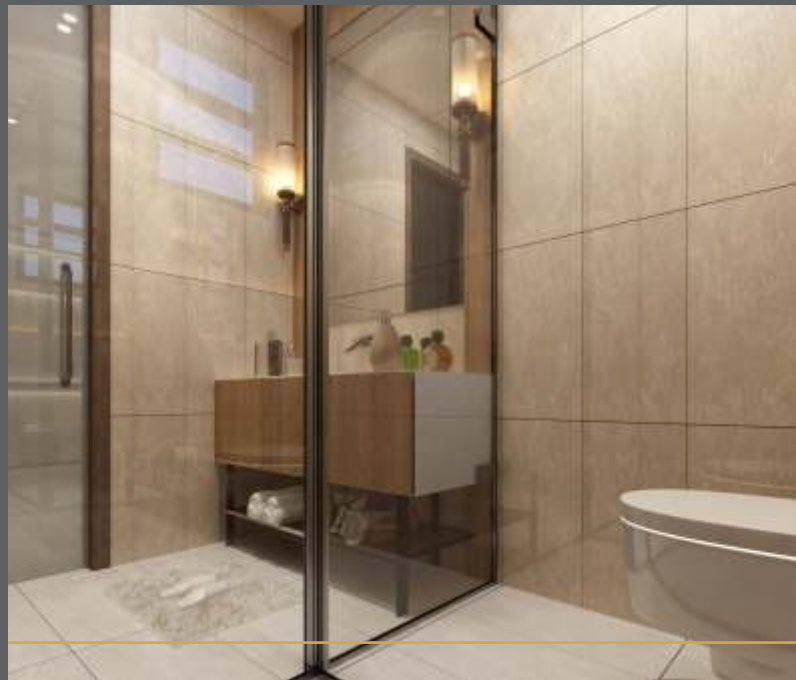




3 BHK
CUT SECTION



4 BHK
CUT SECTION



3 BHK PENTHOUSE (LOWER)
CUT SECTION



4 BHK PENTHOUSE (LOWER)
CUT SECTION



3 BHK PENTHOUSE (UPPER TOP)
CUT SECTION



4 BHK PENTHOUSE (UPPER TOP)
CUT SECTION





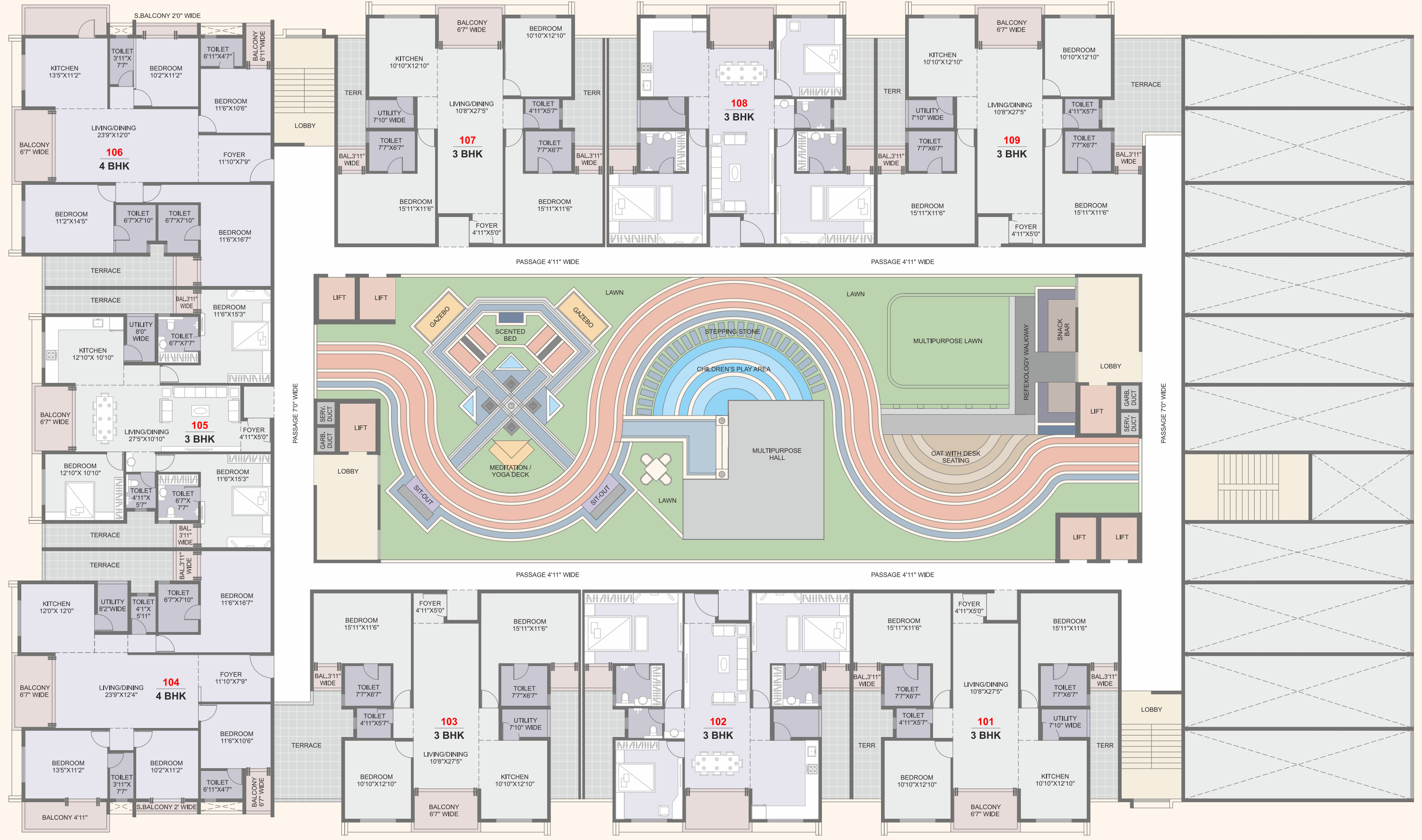
BASEMENT FLOOR (PARKING)





GROUND FLOOR (PARKING & SHOPS)





FIRST FLOOR (FLATS)





SECOND FLOOR (FLATS & OFFICES)





THIRD FLOOR (FLATS)





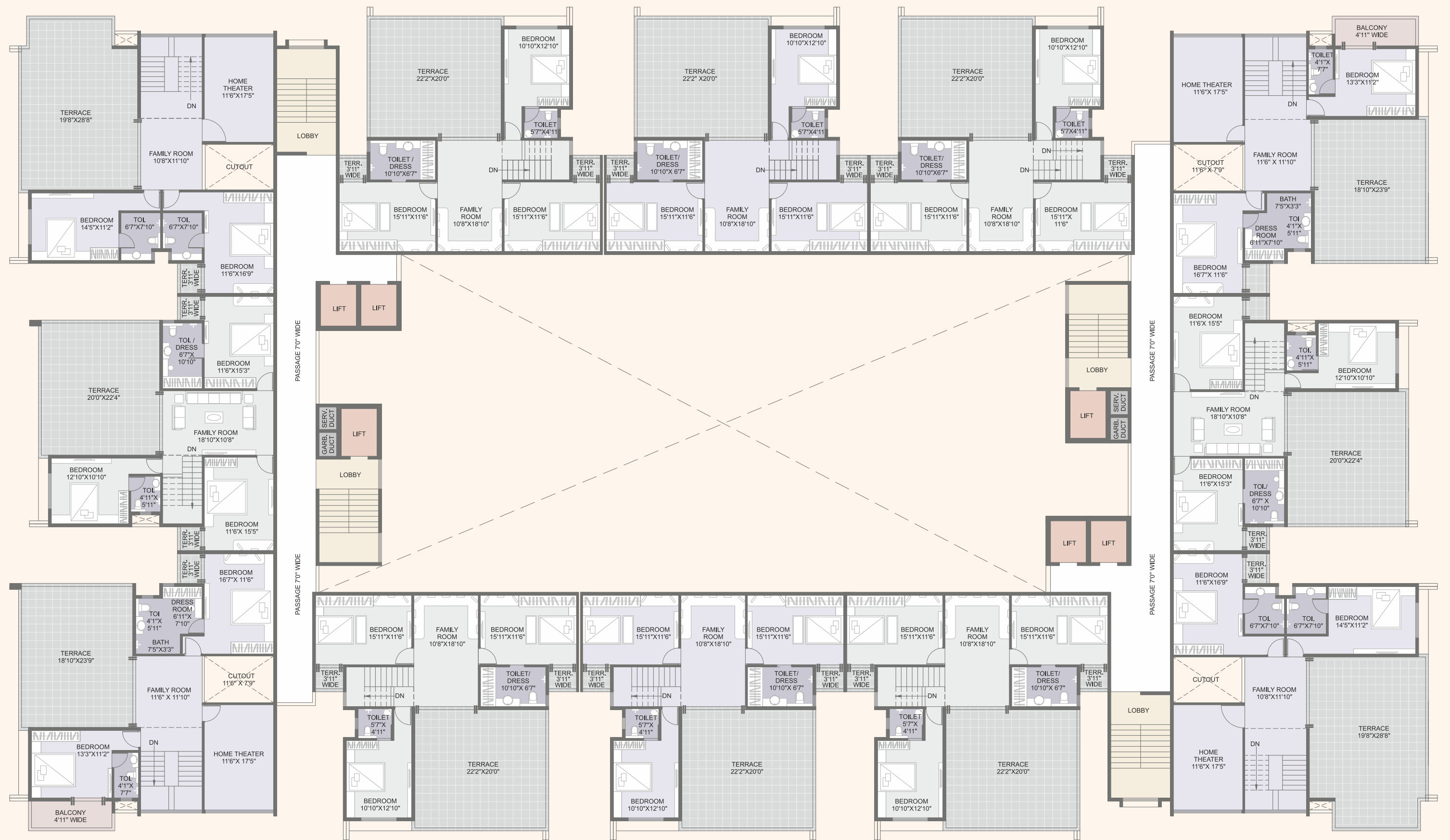
FOURTH TO SIXTH FLOOR (FLATS)





EIGHTH FLOOR (PENTHOUSES)





NINTH FLOOR (UPPER FLOOR)





📍 Wockhardt Research Centre	-	Walking Distance
📍 Naregaon	-	3.4 km
📍 Universal High School	-	2.1 km
📍 Hyatt Hotel	-	2.9 km
📍 Jalna Road	-	1.6 km

📍 High Court	-	2.4 km
📍 Garware Stadium	-	1.2 km
📍 Lokmat Bhawan	-	2.4 km
📍 Rama International	-	2.4 km
📍 Ajanta Ambassador	-	2.3 km

📍 Lemon Tree Hotel	-	1.6 km
📍 Kala Ganpati Mandir	-	1.6 km
📍 Cannought Place	-	1.6 km
📍 Cidco Bus Stand	-	1.4 km
📍 INOX Tapadia	-	1.3 km

📍 Gym Khana Club	-	1.8 km
📍 MGM Hospital	-	2.7 km
📍 Medicover Hospitals	-	1.8 km

SPECIFICATION

RCC STRUCTURE :

- Earthquake resistant seismic zone structural RCC frame.

WALLS :

- External and internal wall 150 mm thick AAC Block.

PLASTER :

- External 2 coat sand face plaster.
- Internal smooth finish plaster.

WINDOWS :

- Powder coated aluminium sliding windows with mosquito net.
- Granite frame for windows.
- Louvered windows in bathrooms with provision for exhaust fan.

FLOORING AND TILING :

- High gloss double charge vitrified flooring in all rooms with skirting.
- Anti skid flooring in attached terrace and bathroom.
- Dado tiling in bathrooms upto ceiling.

KITCHEN :

- Kitchen platform with granite top.
- Stainless steel sink.
- Glazed tiles upto lintel level.
- Provision for washing machine with water inlet a drain in dry balcony.
- Provision for water purifier and exhaust fan.
- M.S. railing for dry balcony.

TERRACE :

- SS railing with tafan glass.

ELECTRIFICATION :

- Adequate concealed electrical points with copper wiring.
- Ample electrical points with modular switches.
- Cable TV point in living room and master bedroom.
- AC point provision in all bedrooms.
- Each feat with ELCB (Earth leakage circuit breaker) for electrical safety.

PAINT :

- External : Apex Ultima
- Internal : Acrylic Emulsion paint

PLUMBING :

- Concealed CPVC plumbing with premium quality C.P. and sanitary fittings.

DOORS :

- Flush main door with decorative laminate.
- Sheet tough quality french door with mosquito net for terrace.

TOILET :

- Granite frame for doors and decorative laminate for doors.
- Hot and cold concealed diverter with overhead shower.
- Jaquar & Aqualite brand sanitary fittings
- Toilet window with exhaust fan.

LIFT :

- Premium quality passenger lift with power backup & service lift.



MAHARERA REG. NO.
P51500077300



SCAN QR CODE TO VISIT
SITE LOCATION

Project by

SWIFT
ENGINEERING PVT LTD

SITE :

Opposite Wokhart Research Center, Chikalthana MIDC,
Chhatrapati Sambhajnagar (Aurangabad).

OFFICE :

Swift Engineering Pvt. Ltd., E-32/A2 Chikalthana MIDC,
Chhatrapati Sambhajnagar.

E-mail : website :

BOOKING CONTACT
+91 90283 27444

CREDITS

Architect
Ar. Manoj Kala
And Associates

Structural Consultant
Core Consultants
Prashant Kala/ Rajesh Wargantwar

MEP Consultant
Mega Engineers
Er Syed Mustafa

3D Rendering & Media



3D POWER
Ranjit Patil



Project by

SWIFT
ENGINEERING PVT LTD

BOOKING CONTACT

+91 90283 27444